

# 38. EasyDownload

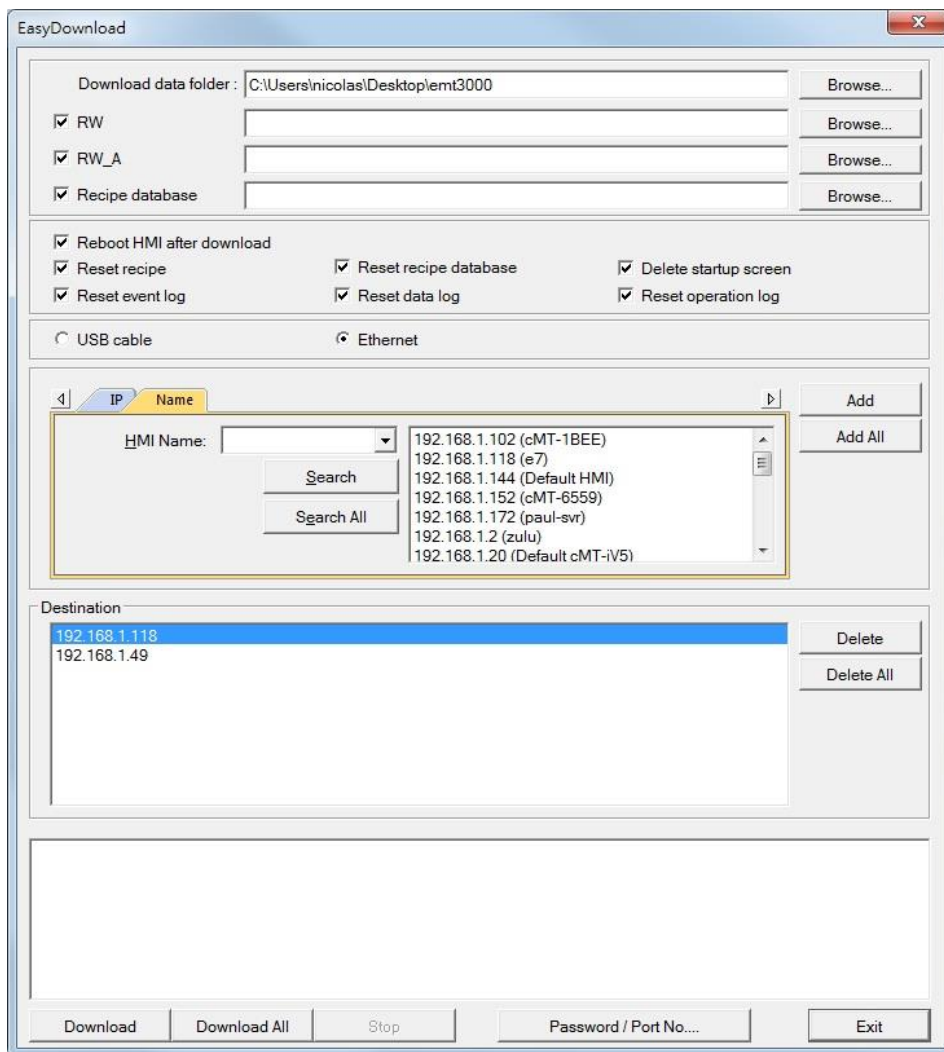
This chapter explains how to setup EasyDownload.

38.1. Overview .....	38-7
38.2. Configuration .....	38-7

## 38.1. Overview

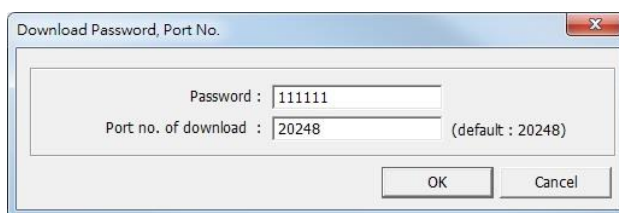
EasyDownload allows downloading the project data file built in EasyBuilder Pro via Ethernet or USB cable. In EasyBuilder Pro main menu select [Project] and then select [Build for SD card/USB disk download] to build the data file before running EasyDownload.

## 38.2. Configuration



Settings	Description
<b>Download data folder</b>	Browse for the project data file to download.
<b>RW</b>	Browse for the recipe data (.rcp) to download.
<b>RW_A</b>	Browse for the recipe data (.rcp) to download.
<b>Recipe database</b>	Browse for the recipe database (.db) to download.
<b>Reboot HMI after download</b>	If selected, HMI will reboot after downloading.

<b>Reset recipe</b> <b>Reset recipe database</b> <b>Delete startup screen</b> <b>Reset event log</b> <b>Reset data log</b> <b>Reset Operation Log</b>	The selected files will be erased before downloading.
<b>USB cable</b>	Download the file to HMI via USB cable. Please make sure that the USB driver is correctly installed.
<b>Ethernet</b>	Download the file to HMI via Ethernet.
<b>IP</b>	Enter the target HMI IP address.
<b>Name</b>	Enter the target HMI name.
<b>Search</b>	Search by HMI name.
<b>Search All</b>	Search from all the HMI names on the same network.
<b>Add</b>	Add the selected HMI in the Search field to the Destination field.
<b>Add All</b>	Add all the HMI in the Search field to the Destination field.
<b>Destination</b>	A list of all the HMI for download.
<b>Delete</b>	Delete the selected HMI in the Destination field.
<b>Delete All</b>	Delete all the HMI in the Destination field.
<b>Download</b>	Click to start download to the selected HMI in the Destination field.
<b>Download All</b>	Click to start download to all the HMI in the Destination field.
<b>Password / Port No.</b>	Enter the password and the port number of download set in HMI system settings.



 **Note**

- Take eMT3000 Series as an example, the built download data directory has the following structure. Please select the parent directory of the generated file when download.

Parent directory	First subdirectory	Second subdirectory
emt3000	001	
	002	
	Pub	driver
		font

- The parent directory name changes according to the model used.
- Downloading to multiple HMI is only supported by Ethernet.
- When downloading the project to multiple HMI at a time, all the HMI must use the same password and port number.
- The downloading process goes from the top of Destination list to the bottom. Only when the downloading of one HMI is done will the downloading of next HMI start.
- To avoid long waiting time for an off-line HMI, the wait time is 3 seconds.