

# User Manual

Wi-Fi Wireless Network Settings Guide

## Table of Contents

Chapter1. Overview .....	1
1.1. Introduction .....	1
1.2. System Requirement.....	1
Chapter2. System Settings.....	1
2.1. Wi-Fi setting .....	1
2.1.1. Configuration .....	1
2.1.2. Setting Steps .....	2
Chapter3. System Information .....	4
3.1. Wi-Fi .....	4
3.2. Wi-Fi Info.....	4
Chapter4. System Registers.....	5

## Chapter1. Overview

### 1.1. Introduction

Certain HMI models have wireless network connection (Wi-Fi) that allows users to connect to a local wireless access point or the Internet without using any cable. This settings guide explains how to setup Wi-Fi network in HMI System Settings.

### 1.2. System Requirement

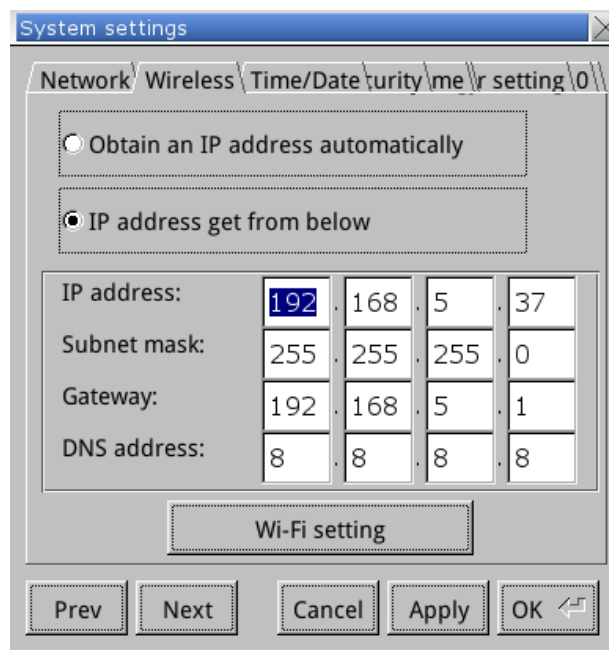
- Weintek HMI with built-in Wi-Fi capability: MT8103iE
- EasyBuilder Pro: V5.04.01 or later versions
- Supported Languages: English, Japanese

## Chapter2. System Settings

After HMI starts up, tap the button in the lower-right corner to open the following four buttons.



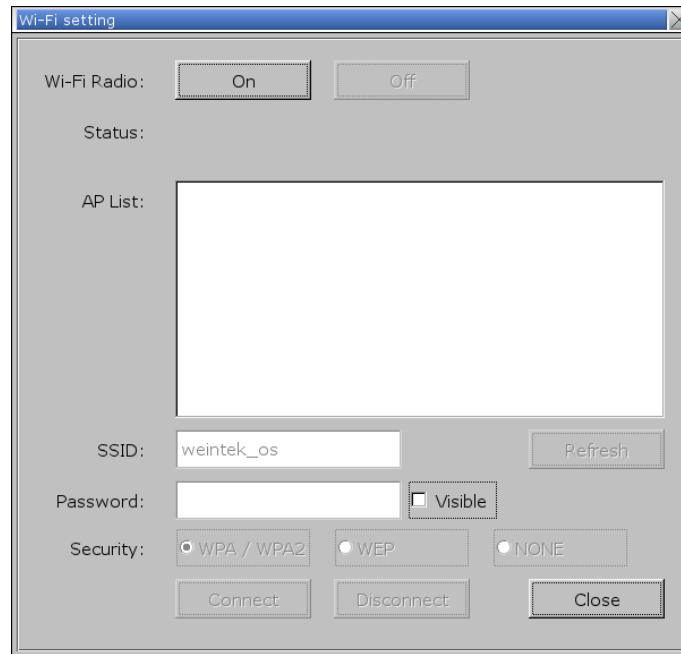
Tap the gear icon on the left to open System Settings dialog box, enter password, and then go to the Wireless tab. Choose whether to obtain an IP address automatically (DHCP) or specify the IP address manually. The settings are similar to general network settings.



### 2.1. Wi-Fi setting

#### 2.1.1. Configuration

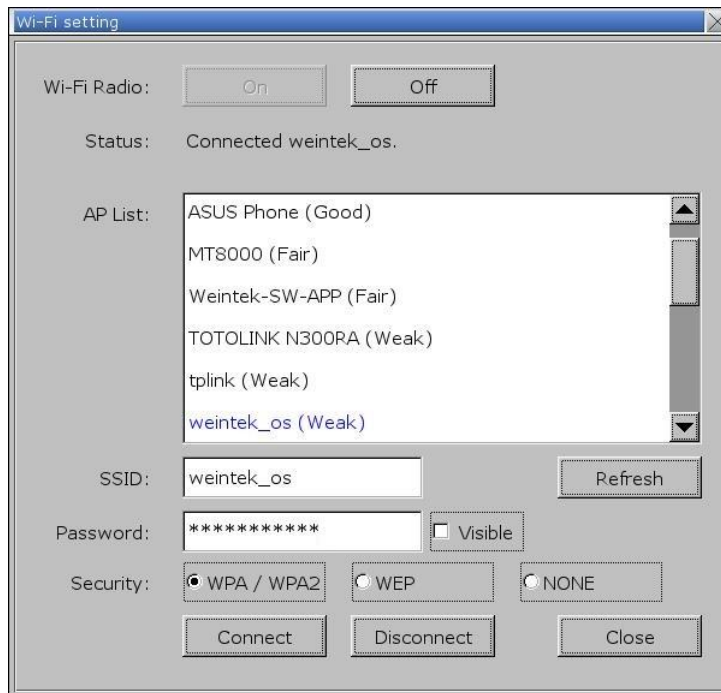
Tap the [Wi-Fi setting] button in the Wireless tab to open the following settings dialog box.



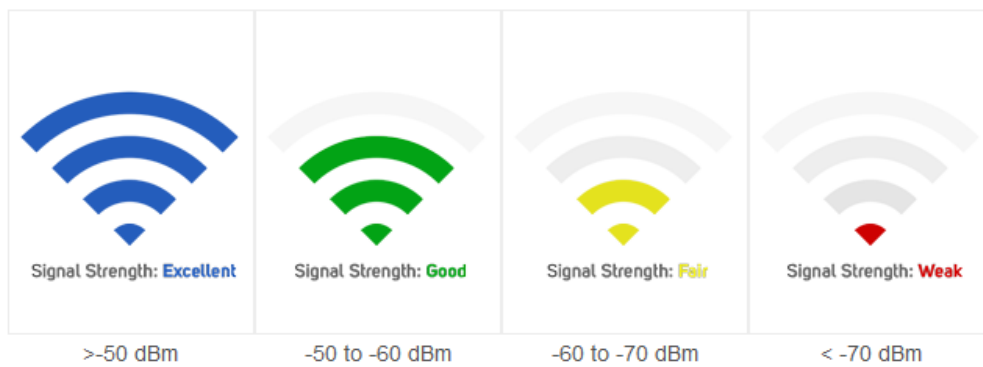
Wi-Fi Radio	Turn Wi-Fi radio on or off.
Status	The status includes: Stopped, Connecting, Retrying, or Connected.
AP List	A list of currently available access points.
Refresh	Refresh the AP list.
SSID	SSID name of the wireless access point to connect with.
Password	The password can either be visible or invisible.
Security	Encryption modes.
Connect/Disconnect	Connect to or disconnect from Wi-Fi.
Close	Close this dialog box.

### 2.1.2. Setting Steps

1. Tap On button to turn on Wi-Fi.
2. Choose a network from the AP list.
3. Enter Password and decide whether to show or hide it.
4. Select an encryption mode.
5. Tap Connect button, if the connection is successful, the Status field shows “Connected”.



The signal strength is classified into four levels: Excellent/Good/Fair/Weak, as shown below.

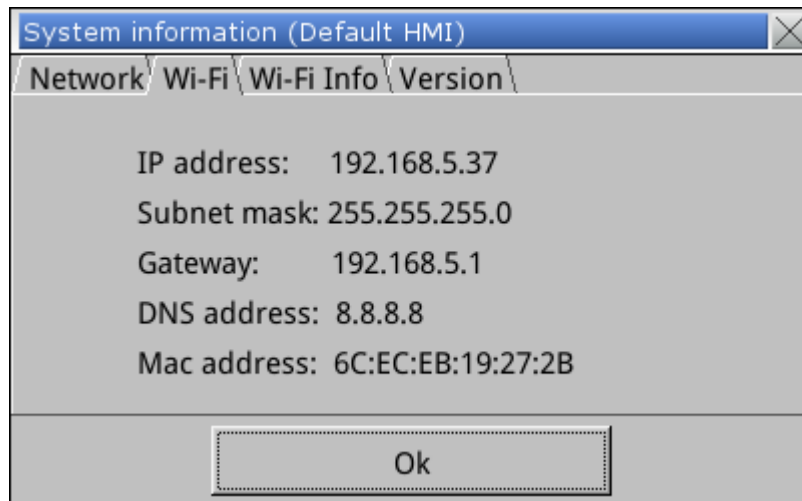


## Chapter3. System Information

You can find the following two tabs in the System Information dialog box (Opened by tapping the notepad icon next to the gear icon which opens System Settings window).

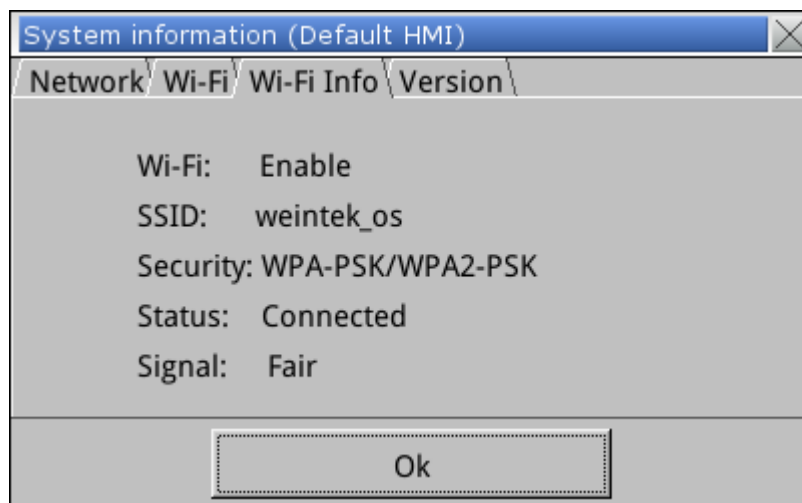
### 3.1. Wi-Fi

This tab shows network addresses.



### 3.2. Wi-Fi Info

This tab shows the information about the Wi-Fi currently connected.



## Chapter4. System Registers

EasyBuilder Pro provides the following system registers related to Wi-Fi:

LW-11383 (16bit)	Wi-Fi connection (1: Disconnect, 2: Connect, 3: Popup Wi-Fi config) (Wi-Fi)	R/W
LW-11384 (16bit)	Error code (0: No error, 1: No such device, 2. Wi-Fi radio is off) (Wi-Fi)	R
LW-11385 (16bit)	Status (0: Stopped; 1: Connecting; 2:Retrying 3: Connected) (Wi-Fi)	R
LW-11386 (16 words)	Connected SSID (Wi-Fi)	R
LW-11402 (16bit)	Signal level (0: None, 1: Weak, 2: Fair, 3: Good, 4: Excellent) (Wi-Fi)	R
LW-11403 (16bit)	country code (Wi-Fi)* <a href="#">Note1</a>	R/W
LW-11404 (16bit)	Wi-Fi radio (0: Off, 1: On) (Wi-Fi)	R/W

\*[Note1](#): LW-11403 Country Code: ASCII, Uppercase, effective immediately. Country code affects available wireless channels the HMI can connect to.